

Transaction File Upload and Login Using SSH

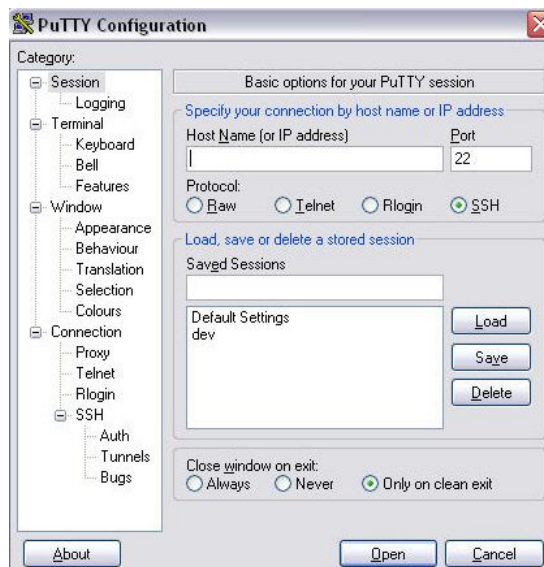
This procedure is to guide the CRAM 21 users on how to upload a large size transaction file (claim or payments) to our server. As opposed to uploading your transaction via a web browser (limited data size), this procedure can upload a large amount of data files to our server (handles claims/payments in excess of 10 Megabytes or more). After a successful upload, you may need to login to the server and run the posting process to the CRAM 21 system

Pre-requisite:

1. Your account is already set up by DpRx personnel for SSH communication
2. CRAM 21 system is already installed
3. For windows users, you must have putty.exe, pscp.exe, puttygen.exe and pageant.exe for windows (these are SSH client applications for windows. If you don't have these applications yet, you can download it from here:
<http://www.chiark.greenend.org.uk/~sgtatham/putty/>
4. For linux users, you already setup your linux machine with “Openssh” application suite. Most linux distribution already comes with this application suite.
5. You already received your Private Key from DpRx. Or you may generate your own private/public key and send us your public key and we will load it to your home folder.
6. Your PC must have internet access.
7. You have the IP address of one of our servers.

Steps in Using SSH Client (Pscp) to Upload Files.

1. Change directory to your Putty's folder. If your putty is located at “[C:\putty](#)”, do this:
“`cd c:\putty`”
2. Create a putty session –
 - Type “`putty`” and hit the Enter key. (see figure below)



- Fill in the IP address (This should be provided by DpRx)

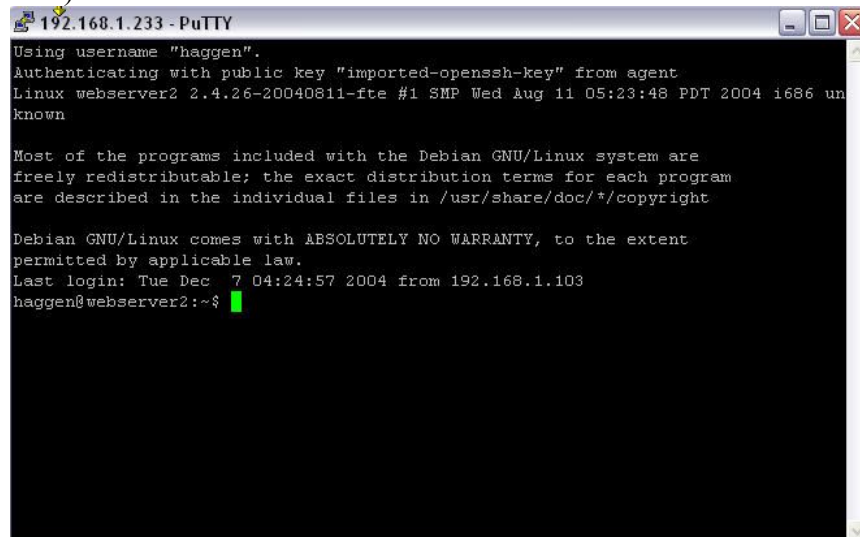
- Type in your session name in the “Saved Sessions” box and click on the “Save” button. The session name will be save for future references.
3. Load your private key – Type in “*pageant test.ppk*” where test.ppk is your private key. It is assumed that you already generated your private key and given us your public key. Or you already received your private key from us. This loads your private key in your PC's memory without you having to type your private key's passphrase (password phrase). The first time that you run “pageant.exe”, you maybe asked to supply the passphrase. Pageant is loaded in memory if there is a icon in the taskbar that resembles a PC with a hat. (See figure below)



4. Upoad file(s) to the server – Type in “*pscp source user@ipaddress:path*”
 where: source – the file to be uploaded
 user – your username
 ipaddress – is the IP address of DpRx SSH Server provided to you.
 Path - “upload.cl” for claims; “upload.py” for payments

Steps in SSH Server Login (Post Files To CRAM 21 System)

1. Type “*putty -ssh -l username -load “saved session”*”
2. If all goes well, you will be taken in your home directory of our SSH Server. (see figure below)



3. Your home directory has 2 folders: upload.cl and upload.py for claims and payments uploaded respectively. To view your home directory type “*ls -a*”
4. Type “*convert_claims.php*” - to post claims or “*convert_payments.php*” to post payments.

Note: Please note that if your file is large, the terminal you are using might appear to freeze. This is normal as the application is reading all of your claims/payments row by row and posting it to CRAM 21 system